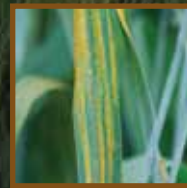


# Wheat Disease Identification





# Contents

## **Diseases affecting heads and grain**

Common bunt .....	1
Fusarium head blight .....	2
Loose smut .....	3
Sooty head molds .....	4
Stagonospora nodorum blotch .....	5

## **Diseases affecting leaves**

Bacterial streak .....	6
Barley yellow dwarf .....	7
Leaf rust .....	8
Powdery Mildew .....	9
Septoria tritici blotch .....	10
Stagonospora nodorum blotch .....	11
Stem rust .....	12
Stripe rust.....	13
Tan spot .....	14
Wheat soilborne mosaic .....	15
Wheat spindle streak mosaic .....	16
Wheat streak mosaic .....	17

## **Diseases affecting stem and roots**

Cephalosporium stripe .....	18
Fusarium root, crown and foot rot.....	19
Take-all .....	20





### **Common bunt**

Wheat kernels infected by common bunt have a gray-green color and are wider than healthy kernels. Diseased kernels can be seen in developing wheat heads but are often not detected until harvest. The outer layers of diseased kernels remain intact initially but are easily broken during grain harvest releasing masses black powdery spores. The fungus produces chemicals with a fishy odor, which sometimes causes this disease to be referred to as “stinking smut.”

**Management:** Fungicide seed treatment, disease-free sources of seed.





## **Fusarium head blight**

Symptoms of Fusarium head blight include tan or light brown lesions encompassing one or more spikelets. Some diseased spikelets may have a dark brown discoloration at the base and an orange fungal mass along the lower portion of the glume. Grain from plants infected by Fusarium head blight is often shriveled and has a white chalky appearance. Some kernels may have a pink discoloration.

**Management:** Avoid most susceptible varieties, crop rotation, foliar fungicides.





### Loose smut

The normal head tissue of plants infected by loose smut is completely replaced with dark masses of fungal spores giving the heads a black powdery appearance. It is possible to see heads damaged by loose smut while much of head is still inside the boot. Only the central stem of the head is left after the spores are released.

**Management:** Fungicide seed treatment, disease free sources of seed.





## Sooty head molds

Sooty head molds are characterized by a dark green or black mold growth on the surface of mature wheat heads. These molds are part of a naturally occurring complex of organisms that help to decay dead plant debris. Sooty molds are most common when mature wheat is subjected to repeated rain events, and delayed harvest. The mold growth is normally superficial and affect on grain is thought to be minor, but can make for dusty harvest operations. Sooty molds can contribute to a discoloration of the grain called “black point.”

**Management:** Generally impractical or not needed.





### **Stagonospora nodorum blotch**

This disease causes dark brown or purple lesions on heads. Lesions are often more intense at the top of the glume with brown streaks or blotches extending down toward the base of the spikelet. The presence of tiny fungal reproductive structures embedded in the tissue can confirm the diagnosis but will require significant magnification.

**Management:** Genetic resistance, foliar fungicides, crop rotation, fungicide seed treatment.



## **Bacterial streak**

Early symptoms of bacterial streak include small, water-soaked areas between leaf veins. These water-soaked areas become tan streaks within a few days. When the disease is severe, streaks may merge to form large irregular areas of dead tissue. When dew is present, the bacteria causing this disease may ooze from the lesions and dry to form a clear thin film. This film flakes easily and is visible when the leaf is viewed from different perspectives.

**Management:** Avoid highly susceptible varieties.







### Barley yellow dwarf

This viral disease causes wheat leaves to have a yellow or red discoloration. The discoloration is often more intense near the tip of affected leaves giving them a flame-like appearance. Barley yellow dwarf often occurs in patches within a field. The size and distribution of these patches depends on the feeding activity of aphids, which spread barley yellow dwarf virus. Infected plants within these patches may be shorter than neighboring healthy plants.

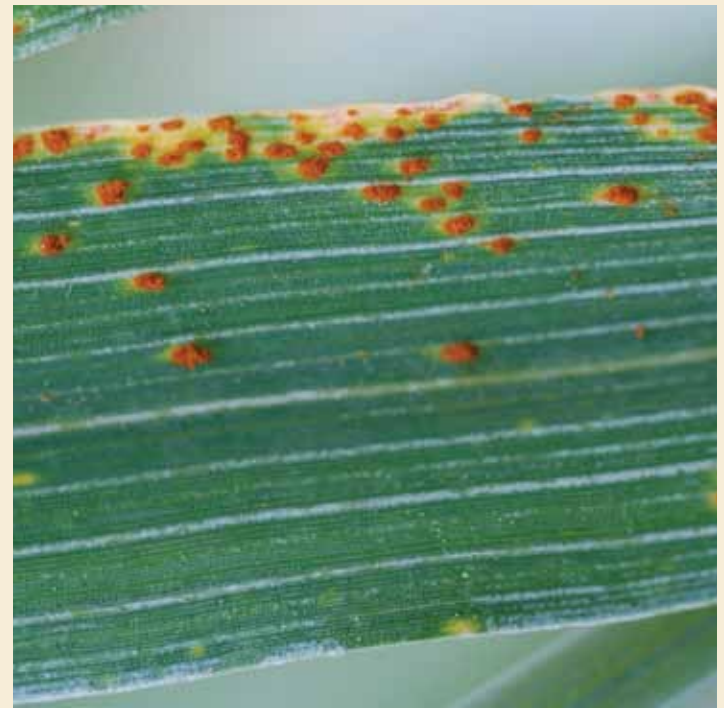
**Management:** Genetic resistance, delayed planting date, insecticide seed treatment.



## Leaf rust

Small, brown, blister-like lesions are key features of leaf rust infections. These lesions are most common on leaves but can occur on the leaf sheath, which extends from the base of the leaf blade to the stem node. Lesions caused by leaf rust are normally smaller, more round and cause less tearing of the leaf tissue than those caused by stem rust.

**Management:** Genetic resistance, foliar fungicides.







### **Powdery Mildew**

Powdery mildew causes white lesions on leaves and leaf sheaths. Glumes and awns also can be infected when disease is severe. Fungal growth is largely limited to outer plant surfaces and can be easily wiped away by rubbing a finger across affected areas. Mature lesions may have dark, reproductive structures mixed with the white cottony growth of the fungus.

**Management:** Genetic resistance, foliar fungicides.



## **Septoria tritici blotch**

This fungal disease causes tan, elongated lesions on wheat leaves. Lesions may have a yellow margin, but the degree of yellowing varies among varieties. The dark, reproductive structures produced by the fungus are key diagnostic features and can often be seen without magnification. This disease is also known as speckled leaf blotch.

**Management:** Genetic resistance, foliar fungicides, crop rotation.







### **Stagonospora nodorum blotch**

The lesions of *Stagonospora* leaf blotch are normally brown or tan surrounded by a thin, yellow halo. Lesions caused by *Stagonospora* leaf blotch are more irregular in shape and often have a darker color than those of tan spot. The presence of small, honey-colored fungal reproductive structures is diagnostic for *Stagonospora nodorum* blotch; however, these reproductive structures are only visible with considerable magnification.

**Management:** genetic resistance, foliar fungicides, crop rotation, fungicide seed treatment.



## Stem rust

Stem rust causes blister-like lesions on leaves, leaf sheaths, and stems. Infection of glumes and awns is also possible. The reddish-brown spores of the fungus cause considerable tearing as they burst through the outer layers of the plant tissues. Mature stem rust lesions are more elongated than those of leaf rust.

**Management:** Genetic resistance, foliar fungicides.



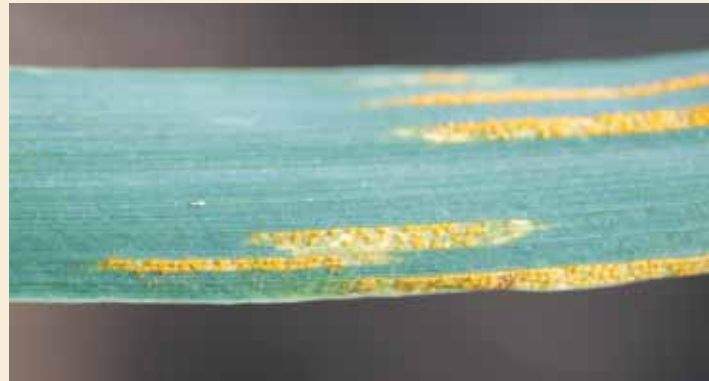




### Stripe rust

Stripe rust causes yellow, blister-like lesions that are arranged in stripes. The disease is normally most severe on leaves, but head tissue also can develop symptoms when disease is severe. Outside the United States, this disease is sometimes referred to as yellow rust.

**Management:** Genetic resistance, foliar fungicides.



## Tan spot

The key diagnostic feature of tan spot is tan lesions with a yellow margin. Mature tan spot lesions often have a dark area in the center. Lesions may merge as they expand resulting in large sections of diseased leaf tissue. The fungus that causes tan spot survives in the debris of previous wheat crops and produces small, black reproductive structures in the spring.

**Management:** Crop rotation, genetic resistance, foliar fungicides.







### **Wheat soilborne mosaic**

Winter wheat infected by wheat soilborne mosaic develops a pale-yellow discoloration shortly after breaking dormancy in the spring. The incidence of wheat soilborne mosaic is often greater in low areas of the field where moist soil conditions favor growth of the protozoa that spread this viral disease. Leaves of infected plants often have a mosaic pattern of dark green blotches on a pale greenish-yellow background. Symptoms will normally fade when warm temperatures slow the activity of the virus within infected plants.

**Management:** Genetic resistance.



## Wheat spindle streak mosaic

Wheat spindle streak mosaic causes a yellow discoloration to wheat seedlings. This yellow discoloration is often most intense in low areas of the field. Leaves of infected plants have long, yellow streaks that are slightly wider in the middle than at their ends. Symptoms are similar to wheat soilborne mosaic and plants often are infected with both diseases.

**Management:** Genetic resistance.







### **Wheat streak mosaic**

Leaves of plants infected with wheat streak mosaic have an bright yellow streaking. Symptoms are often most severe near the tip of the leaf. The virus that causes wheat streak mosaic survives in volunteer wheat and spreads by wheat curl mites. The disease is often most severe in areas of a field that are closest to these sources of the disease and mites. Commonly, plants infected with wheat streak mosaic also are infected with high plains disease and Triticum mosaic. The symptoms of these diseases are nearly identical. Disease severity is greater when plants are infected by more than one virus.

**Management:** Control volunteer wheat, delayed planting date, genetic resistance, avoid planting near maturing corn.



## Cephalosporium stripe

Plants infected with *Cephalosporium stripe* have pronounced yellow stripes running the full length of the leaf blade. The center of the yellow stripe may have a long, brown streak that extends onto the leaf sheath. Splitting the stem of infected plants often reveals small, brown streaks within the node tissue. *Cephalosporium stripe* also can cause areas of stunted, irregular growth within a field. Often, infected plants die prematurely, causing patches of white heads within a field.

**Management:** Genetic resistance, crop rotation, control grassy weeds.







### **Fusarium root, crown, and foot rots**

Fusarium root and crown rots cause patches of wheat to die prematurely resulting in areas of white heads within a field. Infected plants are typically brown at the base and have poor root development. During advanced stages of the disease, the Fusarium fungus often produces a pink, cottony growth inside the lower portions of the stem.

**Management:** Crop rotation, control grassy weeds.



## Take-all

This fungal disease causes wheat to die prematurely resulting in patches of white heads in otherwise green fields of wheat. Plants infected by take-all normally have a black discoloration of the lower stem and roots. Frequently, the disease is most severe near the edges of the field where the fungus survives in association with grassy weeds.

**Management:** Crop rotation, control grassy weeds.





## **Acknowledgements**

This publication was developed by the multi-state extension and research committees for small grain diseases, NCERA-184 and WERA-97. Publication authors: Erick De Wolf, James Shroyer, and Brian Olson, Kansas State University. Photo credits: Erick De Wolf, Bill Bockus, James Shroyer, and Bill Willis, Kansas State University and Marcia McMullen North Dakota State University. The USDA-NIFA Extension Integrated Pest Management program award 2009-41533-05331 sponsored development and distribution of this publication.

**For additional assistance identifying  
diseases of wheat or barley contact:**

Kansas State University  
Plant Disease Diagnostic Lab  
4032 Throckmorton PSC  
Manhattan, KS 66506  
(785) 532-5810  
*clinic@ksu.edu*

Publications from Kansas State University are available on the World Wide Web at:  
*www.ksre.ksu.edu*

Publications are reviewed or revised annually by appropriate faculty to reflect current research and practice. Date shown is that of publication or last revision. Contents of this publication may be freely reproduced for educational purposes. All other rights reserved. In each case, credit the authors, *Wheat Disease Identification*, Kansas State University, March 2011.

Kansas State University  
Agricultural Experiment Station  
and Cooperative Extension Service

MF-xxxx



March 2011

K-State Research and Extension is an equal opportunity provider and employer. Issued in furtherance of Cooperative Extension Work, Acts of May 8 and June 30, 1914, as amended. Kansas State University, County Extension Councils, Extension Districts, and United States Department of Agriculture Cooperating, Gary Pierzynski, Interim Director.