



Information

DEPARTMENT OF PLANT SCIENCE & LANDSCAPE ARCHITECTURE
COLLEGE PARK, MD 20742 - (301) 405-4558

Agronomy Facts No. 32
Revised April 2016

2015 MARYLAND SOYBEAN VARIETY TESTS

Maryland soybean variety tests are conducted each year by the Maryland Agricultural Experiment Station, Department of Plant Science and Landscape Architecture, to provide soybean growers with the latest information on agronomic performance of soybean varieties. Varieties are tested by maturity group as designated by the releasing organization. Varieties of Maturity Groups 3, 4, and 5 are included in the tests because they are best adapted for production in Maryland. Late maturing varieties in Maturity Group 4 (relative maturities of 4.6 to 4.9) were evaluated separately from the earlier maturing varieties in Maturity Group 4 and are listed as “4s” in the data tables. All entries in the 2015 test are tolerant to Roundup herbicide. Entries with STS in their names also have tolerance to the sulfonylurea herbicides. The brands and suppliers of the entries in this year’s test are listed in Table 1.

The Maryland tests are designed to evaluate varieties at several planting dates and on various soil types within the soybean production areas of the state. Recommended cultural practices were followed in the establishment of each test. Tillage, row spacing, seeding rates, and plot length varied between tests and locations as shown in Table 2. Seed yield was determined on center rows of each plot, and plots were trimmed to a uniform length after stand establishment. Each plot was replicated three times in each test and location in a randomized block design. Seed moisture was determined on each plot at harvest and seed yield was adjusted to a 13% moisture level. Plant height lodging and maturity date (leaf drop) were determined at maturity when 95% of the pods on each variety had attained their mature color.

In the 2015 growing season, the average temperatures during late May and early June were slightly above average. During the summer, temperatures were slightly below average with an above average spike in September. The Western Shore’s high and low temperatures were similar to those of the Eastern Shore with the exception of a period of lower temperatures in October. The Eastern Shore generally stays more moderate in the Fall due to the influence of the Ocean and Bay which still have relatively warm water then.

In the past thirty years in Maryland, the high temperatures were more stabilized until the early 2000s when they became more variable where it reached the two greatest low temperatures in the thirty year span. The low temperatures for Maryland varied greatly, but there were only two instances where the lowest temperatures reached below zero degrees Fahrenheit. In the past few years, the temperatures are on the decline for the greatest low temperatures in Maryland’s history.

Precipitation across the state was below the 30 year average for all soybean growing months, except June which was extremely above average. The precipitation in June was over 6 inches which deviates from the 30 year average of around 4 inches. August precipitation on the Western Shore was less than 1 inch which is well below the 30 year average of around 4 inches.

Found below in Figure 1. and Figure 2. are both the 2015 growing season's and 30 year mean temperatures and precipitation of the Western and Eastern Shore. The data for the 2015 growing season of the Western and Eastern Shores and the thirty year averages of Maryland for precipitation are also located at the bottom of this report within the same graph for the temperature means for both areas. Monthly rainfall amounts for May through October for the test locations are shown in Table 3.

Figure 1. Western Shore Precipitation and Temperature Means vs Maryland's Overall Precipitation and Temperature Means.

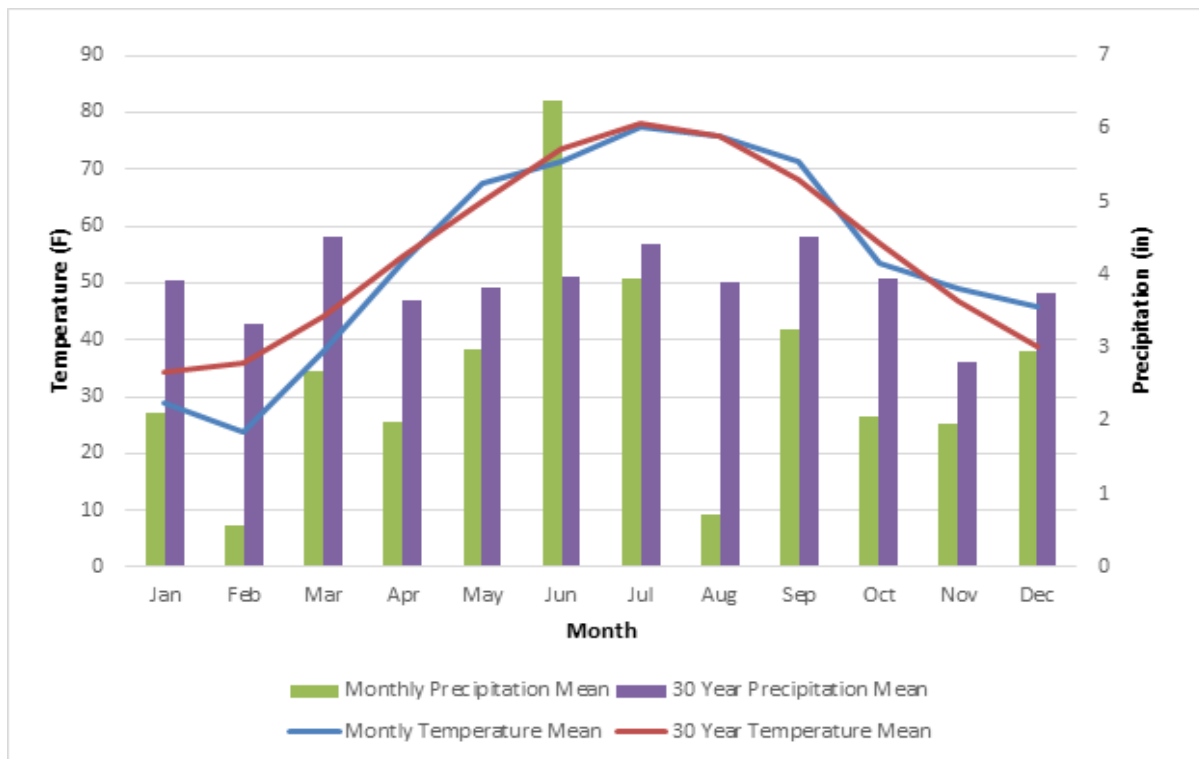
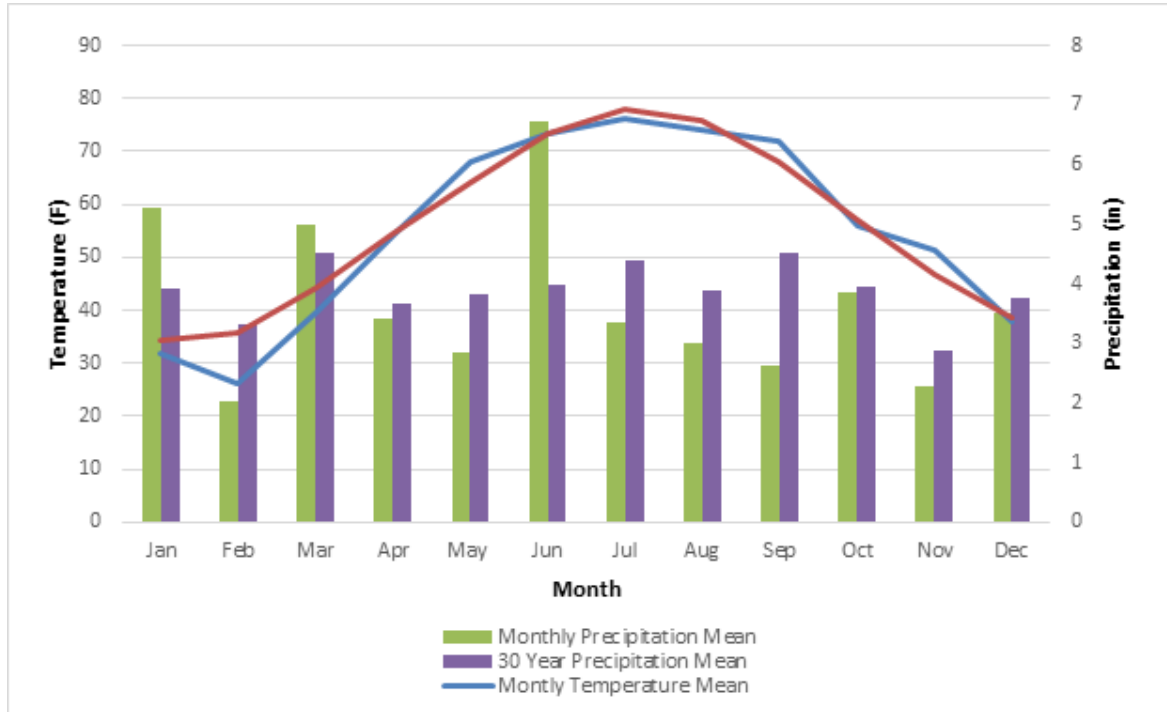


Figure 2. Eastern Shore Precipitation and Temperature Means vs Maryland’s Overall Precipitation and Temperature Means.



*Weather data was taken from USClimateData and Weather Underground

Results of the 2015 tests are reported in Tables 1-9. In each of these tables, varieties within maturity groups are listed in order of yield, highest to lowest. The highest overall test location mean yields were at Queenstown for the full-season tests Group 3 maturity group (78.7 Bu/A) and Quantico for the double-crop tests (66.0 Bu/A).

A least significant difference (LSD) value is reported for each maturity group in every test where statistically significant differences in plant characteristics were observed among varieties. This number is a statistical test calculated at the 20 percent probability level to aid in comparing the differences among varieties in a maturity group. When two varieties are compared for a plant characteristic and the difference between them is greater than the calculated LSD value, the varieties are judged to be significantly different for that specific characteristic. The “ns” designation indicates that there are no statistically significant differences among the varieties in that maturity group for that specific characteristic. The coefficient of variation (CV) is a relative measure of the variation and is an indicator of the degree of precision for a particular test. For these soybean variety tests, CV values below 15% are an indication that the precision of the test is good in distinguishing differences in seed yield between varieties.

The performance of a variety for several years or at several locations in the same year gives a better indication of its yield potential and agronomic characteristics than do data from a single year or location. As an aid in assessing the performance of individual varieties in the test, a relative yield value was calculated. Table 6 has a statewide column of yield percent which gives the relative yields of the varieties by expressing their yields as a percentage of the mean yield of all varieties in that maturity group. Therefore, a variety with a relative yield that is consistently greater than 100 is a variety that consistently yields higher than the mean yield of all varieties in that maturity group.

Two-year average yields of varieties previously entered in the 2014 tests are shown in the data tables for each location. The 2014 location average yield for each maturity group and the 2014 LSD value are included in the data tables to compare variety yield differences in both years. The multiple-year data provide additional information on a variety's yielding ability. The information provided here should be used as a guide and growers should select a variety with great care based on personal experience as well as other available information.

Although the Clarksville site was planted and maintained in 2015, mechanical difficulties during harvest impaired data quality. This information is not presented because accurate comparisons could not be made. Clarksville will be planted in 2016.

Prepared by: J.P. Wight, A. Cooper, and A. C. Mills. Department of Plant Science and Landscape Architecture

Acknowledgements:

The financial support of University of Maryland Agricultural Experiment Station, the Maryland Soybean Board, and the Maryland Crop Improvement Association. The contributions, Moynul Islam, Louis Thorne, and Andrew Bauer. The staff of the Maryland Agricultural Experiment Station including R.J. McDonald, D.K. Armentrout, F.A. Senkbeil, J.I. Streett, and D.M. Justice are recognized as being essential in the successful completion of these tests and are gratefully acknowledged.

Additional information:

Inclusion of entries in the Maryland Soybean Variety Tests does not constitute an endorsement or recommendation of a specific entry by the University of Maryland. Advertising statements by an individual company about the performance of its entries can be made as long as they are accurate statements about the data as published, with no reference to other companies' varieties. Statements similar to "See the official University of Maryland Soybean Variety Tests Agronomy Facts No. 32" and "Endorsement or recommendation by the University of Maryland is not implied" must accompany any information that is reproduced. Agronomy Facts No. 32 can be downloaded by selecting 'Soybeans' on the Department's cropping system webpage and choosing the appropriate publication: <http://www.mdcrops.umd.edu/> .



LIST OF TABLES

TABLE 1.	Seed suppliers, treatments and brands represented in 2015	6
TABLE 2.	Test plot information	7
TABLE 3.	Monthly precipitation at each location	8
TABLE 4.	Variety performance & 2-Year Means at Keedysville	9
TABLE 5.	Variety performance & 2-Year Means at Queenstown (Full Season)	11
TABLE 6.	Variety performance at & 2-Year Means Queenstown (Double Crop)	13
TABLE 7.	Variety performance at & 2-Year Means Quantico (Full Season)	15
TABLE 8.	Variety performance at & 2-Year Means Quantico (Double Crop)	17
TABLE 9.	Variety performance Statewide	19

Table 1. Seed suppliers, treatments and brands represented in the 2015 Maryland soybean variety test.

Supplier/Address/Local Rep.	Brand	Varieties and Seed Treatments
Syngenta Seeds, Inc.; 11055 Wayzata Blvd., Minnetonka, MN 55305; Sudeep Mathew (240) 772-7514 sudeep.mathew@syngenta.com	NK	S43-K1, S40-N2, S48-P4
T. A. Seeds; cchelko@taseeds.com	T. A. Seeds	TS4269R25, TS4869R25, TS4669R2
Pioneer Hi-Bred Intl., Inc.; 59 Greif Pkwy- Suite 200, Delaware, OH 43015; Bill McCollum (302) 584-5428; bill.mccollum@pioneer.com	Pioneer	P-39-T67R, P-46-T21R
Southern States Coop; 6606 West Broad St. , Richmond, VA 23230; Jason Hinton (804) 291-6785; jason.hinton@sscoop.com	Southern States	SS 3813N R2, SS 3914NS R2, SS 4215NS R2, SS 4312N R2, SS 4514N R2, SS 4714NS R2, SS 4725NS R2, SS 4915NS R2, SS 4917N R2, SS 4414N R2, SS 4510N R2, (treated with Acceleron, Poncho/votivo, Excalibre SA, and Biostart ST)
Mid-Atlantic Seeds, Inc., 204 St Charles Way #163E, York, PA 17402; James Vizzard (717) 852-8894; jamesvizzard@comcast.net	Mid-Atlantic	MA3415RR2, MA3889RR/STS, MA3516nRR2, MA3815NRR2, MA4355RR2/STS, MA4315RR2/STS, MA4722RR2/STS, MA4614RR2/STS
UniSouth Genetics, Inc.; 3205-C HWY 46 S, Dickson, TN 37055; Stacy Burwick (800) 505-3133; sburwick@usgseed.com	USG	73P93R, 74F24RS, 74B42R, 74A74RS, 74B83RS, 74D95RS, 74F53RS (treated with Ipconazole & Imidacloprid)
Seedway; 5901 Vera Cruz, Emmaus, PA 18049; Jerry Davis (800) 225-4131; jdavis@Seedway.com	Seedway	SG3644, SG3764, SG3963 (treated with Cruisermax/Vibrance)
Dyna-Gro; 1140 Sweet RD, East Aurora, NY 14052; Tom Barber (716) 912-5494; tom.barber@cpsagu.com	Dyna-Gro	31RY45, S46RY85, S48ES53, S49RY25, S37RS96, S38RY56, S39RY65, S40RY25, S42RY46, 39RY43, S43RY95, (treated with Cruisermax/Vibrance)
Hubner Seed 306 N Main St Monticello, IN 47960; Joe Maloney (410) 708-3052 jfmalo@hubnerseed.com	Hubner Seed	H35-16R2, H37-14R2STS, H42-13R2, H42-16R2, H45-16R2, H48-13R2STS
Bayer CropScience; 395 Salem Church Road Wendell, NC, 27591; Jenny Cahoon (252) 904-5788 jenny.cahoon@bayer.com	CZ	3560, 3991, 4181, 4590, 4959
Terral Seed, Inc; 117 Ellington Drive Rayville, LA, 71269; Marty Hale (318) 231-8800 (Office) mhale@terraalseed.com	Terral Seed	REV38R10, REV39A35, REV47R34, REV49R94, REV51A56, REV55R53, REV56R63, REV57R21, (treated with Bacillus subtilis, Bacillus pumilis)
Doebler's PA Hybrids Inc.; 202 Tiadaghton Avenue Jersey Shore, PA 17740; Doug Messersmith (570) 753-3210 dmesser@doeblers.com	Doebler's	DB4715RR, DB3815RR, DB3516R
Asgrow; Mike Harrison michael.harrison.jr@monsanto.com	Asgrow	4135, 3832, 4632, 4835, 3936, 4336
Syngenta Seeds, Inc.; Sudeep Mathew (240) 772-7514 sudeep.mathew@syngenta.com	Syngenta	S-48-D9, S-42-E5, S-47-K5, S-41-J6, S-45-R7, S-39-C4 (treated with Clariva Complete)

Table 2. The 2015 Soybean variety test plot information.

WESTERN MARYLAND RESEARCH & EDUCATION CENTER
Washington County - Keedysville, MD

Tests: Maturity Groups 3, 4, and 4s
Planting Date: May 29
Row Spacing: 24 inches
Soil Type: Hagerstown silt loam
Soil Test: pH 6.7, P 124 (H), K 149 (G)
Fertilizer: None
Lime: None
Herbicide: 22 Oz/A Roundup Power Max + 5 Oz/A Cloak (May 30)
Plots: 4 rows, 20 feet long
Seeding Rate: 6.5 seeds/foot
Tillage: Conventional

WYE RESEARCH & EDUCATION CENTER
Queen Annes County - Queenstown, MD

Tests: Full Season, Maturity Groups 3, 4, 4s, and 5
Planting Date: May 22
Row Spacing: 24 inches
Soil Type: Matapeake silt loam
Soil Test: pH 5.9, P Index- 127, K Index- 51
Fertilizer: 0-0-120 + 25 S
Lime: None
Herbicide: Pre: 6.45 Oz/A Authority First +2 Pt/A Medal II (May 21)
Post: 1.5 Qt/A Gly Star Plus (July 30)
Insecticide: None
Plots: 4 rows, 20 feet long
Seeding Rate: 6.5 seeds/foot except Maturity Group 5 entries= 6 seeds/foot
Tillage: Conventional

Tests: Double Crop, Maturity Groups 3, 4, 4s, and 5
Planting Date: July 9
Row Spacing: 7.5 inches
Soil Type: Matapeake silt loam
Soil Test: pH 6.3, P Index- 64, K Index- 120
Previous Crop: Wheat
Fertilizer: None on soybeans
Lime: None
Herbicide: Post: 1.5 Qt/A Gly Star Plus (July 25)
Insecticide: None
Plots: 7 rows, 25 feet long
Seeding Rate: 3 seeds/foot
Tillage: None

Table 2. (Continued) Plot Information

LOWER EASTERN SHORE RESEARCH & EDUCATION CENTER-POPLAR HILL FACILITY
Wicomico County - Quantico, MD

Tests: Full Season, Maturity Groups 3, 4, 4s, and 5
 Planting Date: May 22
 Row Spacing: 20 inches
 Soil Type: Nassawango silt loam
 Soil Test: pH 6.2, P sat ratio- 11, K ppm- 137
 Fertilizer: 250 Lbs/A 05-05-30
 Lime: None
 Herbicide: Preemerge: 1.5 Pt/A Roundup + 1 Pt/A Dual II Magnum
 Post: 1.5 Pt/A Roundup+1 Pt/A Dual II Magnum+ 2 Oz/A 2,4-DB (July 16)
 Plots: 4 rows, 20 feet long
 Seeding Rate: 6.5 seeds/foot except Maturity Group 5 entries= 6 seeds/foot
 Tillage: None

LOWER EASTERN SHORE RESEARCH & EDUCATION CENTER-POPLAR HILL FACILITY
Wicomico County - Quantico, MD

Tests: Double Crop, Maturity Groups 3, 4, 4s, and 5
 Planting Date: June 26
 Row Spacing: 20 inches
 Soil Type: Nassawango silt loam
 Soil Test: pH 5.9, P sat ratio- 16, K ppm- 129
 Previous Crop: Barley
 Fertilizer: None on soybeans
 Lime: None
 Herbicide: 1.5 Qt/A Roundup + 1 Pt/A Dual II Magnum + 2 Oz/A 2,4DB (August 5)
 Plots: 4 rows, 20 feet long
 Seeding Rate: 6 seeds/foot
 Tillage: None

Table 3. Monthly precipitation (inches) during May through October 2015 at variety test locations.

Location	May	June	July	Aug.	Sept.	Oct.	Total
Keedysville	2.99	6.39	2.76	.14	3.26	2.07	17.61
Clarksville	2.49	7.68	2.05	.65	3.57	2.67	19.11
Queenstown	2.84	6.73	3.35	3.00	2.64	3.87	22.43
Quantico	2.16	8.94	2.40	1.73	2.16	3.06	20.45

Table 4. Performance of soybean varieties at Keedysville.

Keedysville Full Season

Group 3

Brand	Name	2015			2014		2 - Year	Statewide
		Yield† bu/A	Height in	Leaf Drop	Yield bu/A	Yield bu/A	Yield† bu/A	
Doebblers	DB3815RR	63.4 *	31	10/1	48.5	56.0	68.7 *	
Asgrow	3832	60.4	31	9/30	-	-	63.6	
USG	73P93R	59.6	28	10/2	57.8	-	67.2 *	
CZ	3560	57.3	29	9/30	-	-	61.1	
Seedway	SG3644	56.6	34	10/2	-	-	60.4	
Terral Seed	REV38R10	56.6	33	10/1	-	-	63.1	
CZ	3991	56.0	31	10/3	-	-	64.9 *	
Pioneer	P-39-T67R	55.8	28	9/30	-	-	63.9	
Dyna-Gro	S38RY56	55.2	31	10/2	-	-	59.8	
Mid-Atlantic	MA3415RR2	54.1	31	10/1	-	-	63.0	
Asgrow†	3936	53.4	28	9/30	-	-	63.1	
Terral Seed	REV39A35	53.2	35	10/1	-	-	66.3 *	
Southern States	SS 3914NS R2	52.3	30	9/30	51.6	51.9	64.4	
Mid-Atlantic	MA3889RR/STS	51.5	33	10/2	54.0	52.8	62.1	
Mid-Atlantic	MA3516nRR2	50.4	32	10/1	-	-	57.5	
Seedway	SG3764	50.3	30	10/2	-	-	63.8	
Hubner Seed	H37-14R2STS	50.2	33	10/1	45.3	47.8	64.6 *	
Dyna-Gro	S37RS96	50.1	33	10/1	-	-	61.0	
Dyna-Gro	S39RY65	49.9	31	10/2	55.7	52.8	65.4 *	
Mid-Atlantic	MA3815NRR2	47.2	29	10/2	45.2	46.2	61.6	
Southern States	SS 3813N R2	46.0	29	10/1	44.7	45.3	61.3	
NK†	S39-C4	45.9	30	9/30	-	-	65.5 *	
Seedway	SG3963	45.6	29	10/2	-	-	63.4	
Hubner Seed	H35-16R2	45.3	28	10/1	-	-	58.3	
Doebblers	DB3516R	42.0	28	9/30	-	-	54.3	
Mean		52.3	31	10/1	50.1	51.2	62.7	
LSD 0.20		3.3	3	1.2	9.5	-	4.2	
CV, %		11	9.4	-	12.6	-	9.8	

Group 4

Brand	Name	2015			2014		2 - Year	Statewide
		Yield† bu/A	Height in	Leaf Drop	Yield bu/A	Yield bu/A	Yield† bu/A	
Hubner Seed	H45-16R2	65.9 *	39	10/4	-	-	64.2	
Southern States	SS 4514N R2	65.3 *	34	10/4	48.9	57.1	65.7 *	
CZ	4181	62.4	38	10/6	-	-	64.4	
Dyna-Gro	31RY45	62.4	37	10/3	47.0	54.7	67.9 *	
Syngenta	S45-R7	61.4	38	10/2	-	-	65.9 *	
Mid-Atlantic	MA4355RR2/STS	60.2	33	10/3	48.4	54.3	61.9	
Dyna-Gro	S40RY25	60.1	32	10/3	38.3	49.2	57.0	
Southern States	SS 4215NS R2	58.0	34	10/4	-	-	65.4 *	
Syngenta	S40-N2	57.8	32	10/3	-	-	63.3	
USG	74F24R5	57.8	35	10/2	55.3	56.5	63.8	
CZ	4590	57.5	37	10/3	-	-	62.7	
Mid-Atlantic	MA4315RR2/STS	56.8	41	10/3	-	-	65.8 *	
Dyna-Gro	39RY43	56.1	37	10/2	47.7	51.9	62.5	
Hubner Seed	H42-16R2	55.6	32	10/2	-	-	66.1 *	
Dyna-Gro	S42RY46	55.2	34	10/4	-	-	62.6	
Asgrow	4135	54.2	36	10/3	-	-	62.5	
Hubner Seed	H42-13R2	53.9	35	10/3	45.8	49.9	63.6	
Syngenta	S43-K1	53.6	40	10/1	-	-	62.1	
NK	S42-E5	53.4	32	10/4	-	-	61.4	
Southern States	SS 4414N R2	53.2	35	10/3	-	-	61.8	
USG	74B42R	53.0	34	10/3	48.0	50.5	64.8	
Southern States	SS 4312N R2	52.9	34	10/2	51.6	52.2	62.6	
NK	S41-J6	52.8	33	10/4	-	-	61.3	
Southern States	SS 4510N R2	52.0	36	10/3	-	-	62.6	
T.A. Seeds	TS4269R25	51.7	35	10/3	-	-	63.0	
Dyna-Gro	S43RY95	51.4	36	10/3	43.7	47.6	61.1	
Asgrow	4336	51.0	37	10/2	-	-	63.6	
Mean		56.5	35	10/3	46.7	-	63.3	
LSD 0.20		2.8	2	1.2	10.5	-	2.5	
CV, %		9.3	9.3	-	13.5	-	8.5	

Table 4. (Continued) Performance of soybean varieties at Keedysville.

Keedysville Full Season

Group 4s

Brand	Name	2015			2014		2 - Year	Statewide
		Yield† bu/A	Height in	Leaf Drop	Yield bu/A	Yield bu/A	Yield† bu/A	
Asgrow	4835	80.1 *	39	10/9	-	-	69.5 *	
Hubner Seed	H48-13R2STS	75.0 *	40	10/10	35.8	55.4	71.5 *	
NK	S48-D9	69.1	40	10/7	-	-	66.6	
Asgrow	4632	68.1	38	10/10	-	-	67.4	
Southern States	SS 4725NS R2	67.6	43	10/11	40.4	54.0	69.6 *	
T.A. Seeds	TS4869R25	67.2	41	10/10	-	-	68.0	
Doebler	DB4715RR	67.2	41	10/11	33.4	50.3	67.8	
Southern States	SS 4915NS R2	66.3	38	10/9	-	-	67.6	
Dyna-Gro	S49RY25	65.7	41	10/10	35.6	50.7	65.1	
USG	74A74RS	65.2	42	10/10	-	-	67.1	
USG	74D95RS	64.9	38	10/8	-	-	67.5	
Southern States	SS 4917N R2	64.5	36	10/8	35.6	50.1	63.5	
NK†	S47-K5	63.5	42	10/12	-	-	67.6	
CZ	4959	63.5	38	10/9	-	-	62.8	
Mid-Atlantic	MA4722RR2/STS	63.3	41	10/11	-	-	64.7	
Pioneer	P-46-T21R	62.4	34	10/9	-	-	68.1	
Mid-Atlantic	MA4614RR2/STS	62.3	36	10/7	-	-	65.0	
Terral Seed	REV47R34	61.2	37	10/10	-	-	66.3	
USG	74B83RS	59.7	35	10/9	-	-	65.6	
T.A. Seeds	TS4669R2	59.5	38	10/10	-	-	65.4	
Dyna-Gro	S46RY85	58.0	37	10/10	42.4	50.2	65.3	
Southern States	SS 4714NS R2	56.3	43	10/11	37.2	46.8	64.1	
Syngenta	S48-P4	56.2	43	10/8	-	-	60.5	
Terral Seed	REV49R94	53.8	35	10/8	-	-	61.6	
Dyna-Gro	S48RS53 STS/RR2	53.3	41	10/10	37.7	45.5	61.8	
Mean		63.8	39	10/9	37.5	-	66.0	
LSD 0.20		3.7	2	1.8	5.0	-	3.0	
CV, %		12.0	9.5		10.8	-	10.6	

Planting Date: May 29

Harvest Date: Oct 20

Row Spacing: 24"

Tillage: Conv.

†All yields and test weights are reported at a 13% moisture content, yields followed by an asterisk " * " are not significantly different from leading line.

We gratefully acknowledge the help of the personnel of the University of Maryland Research and Education Centers.

Table 5. Performance of soybean varieties at Queenstown (Full Season).

Wye Full Season								
Group 3								
Brand	Name	2015			2014		2 - Year	Statewide
		Yield†	Height	Leaf	Yield	Yield	Yield†	
		bu/A	in	Drop	bu/A	bu/A	bu/A	
Doeblers	DB3815RR	81.7 *	42	9/27	57	69.3	68.7	
USG	73P93R	79.9	44	9/27	53	66.5	67.2	
Terral Seed	REV39A35	84.1 *	48	9/26	-	-	66.3	
NK†	S39-C4	83.9 *	47	9/26	-	-	65.5	
Dyna-Gro	S39RY65	75.1	47	9/28	46	60.7	65.4	
CZ	3991	80.4	41	9/27	-	-	64.9	
Hubner Seed	H37-14R2STS	85.0 *	45	9/26	45	65.1	64.6	
Southern States	SS 3914NS R2	87.4 *	41	9/27	54	70.7	64.4	
Pioneer	P-39-T67R	79.5	43	9/25	-	-	63.9	
Seedway	SG3764	80.8	40	9/27	-	-	63.8	
Asgrow	3832	80.3	41	9/25	-	-	63.6	
Seedway	SG3963	82.8 *	45	9/28	-	-	63.4	
Terral Seed	REV38R10	75.7	47	9/26	-	-	63.1	
Asgrow	3936	74.8	45	9/25	-	-	63.1	
Mid-Atlantic	MA3415RR2	76.1	42	9/25	-	-	63.0	
Mid-Atlantic	MA3889RR/STS	71.0	43	9/26	48	59.3	62.1	
Mid-Atlantic	MA3815NRR2	79.4	44	9/26	51	65.2	61.6	
Southern States	SS 3813N R2	77.5	38	9/26	51	64.4	61.3	
CZ	3560	78.2	42	9/24	-	-	61.1	
Dyna-Gro	S37RS96	77.2	42	9/27	-	-	61.0	
Seedway	SG3644	76.6	43	9/27	-	-	60.4	
Dyna-Gro	S38RY56	73.7	43	9/27	-	-	59.8	
Hubner Seed	H35-16R2	74.4	40	9/24	-	-	58.3	
Mid-Atlantic	MA3516nRR2	75.2	43	9/26	-	-	57.5	
Doeblers	DB3516R	77.0	40	9/25	-	-	54.3	
Mean		78.7	43	9/26	50.0	-	62.7	
LSD 0.20		6.0	2	1.1	8.0	-	4.2	
CV, %		7.8	7.6	0.5	11	-	9.8	

Group 4								
Brand	Name	2015			2014		2 - Year	Statewide
		Yield†	Height	Leaf	Yield	Yield	Yield†	
		bu/A	in	Drop	bu/A	bu/A	bu/A	
Dyna-Gro	31RY45	84.9 *	47	10/2	50.6	67.7	67.9	
Hubner Seed	H42-16R2	78.0	47	9/29	-	-	64.2	
Syngenta	S45-R7	82.8	47	9/29	-	-	65.9	
Mid-Atlantic	MA4315RR2/STS	85.3 *	44	9/30	-	-	65.8	
Southern States	SS 4514N R2	75.1	46	10/2	56.3	65.7	65.7	
Southern States	SS 4215NS R2	79.7	47	9/29	-	-	65.4	
USG	74B42R	76.8	44	10/1	50.4	63.6	64.8	
CZ	4181	75.2	47	9/30	-	-	64.4	
Hubner Seed	H45-16R2	77.7	49	9/30	-	-	66.1	
USG	74F24RS	76.6	49	9/30	53.8	65.2	63.8	
Asgrow	4336	76.2	47	9/30	-	-	63.6	
Hubner Seed	H42-13R2	87.3 *	42	9/30	48.1	67.7	63.6	
Syngenta	S40-N2	82.1	43	9/29	-	-	63.3	
T.A. Seeds	TS4269R25	74.8	49	9/29	-	-	63.0	
CZ	4590	80.6	48	10/1	-	-	62.7	
Dyna-Gro	S42RY46	74.9	47	10/1	-	-	62.6	
Southern States	SS 4312N R2	73.0	42	9/27	47.2	60.1	62.6	
Southern States	SS 4510N R2	78.2	50	10/2	-	-	62.6	
Dyna-Gro	39RY43	76.8	45	9/30	54.5	65.7	62.5	
Asgrow	4135	79.5	45	9/29	-	-	62.5	
Syngenta	S43-K1	84.5 *	45	10/1	-	-	62.1	
Mid-Atlantic	MA4355RR2/STS	74.5	48	9/30	48.4	61.4	61.9	
Southern States	SS 4414N R2	75.4	49	9/30	-	-	61.8	
NK†	S42-E5	72.8	43	10/1	-	-	61.4	
NK†	S41-J6	74.0	48	9/29	-	-	61.3	
Dyna-Gro	S43RY95	73.8	50	10/1	47.9	60.9	61.1	
Dyna-Gro	S40RY25	71.9	46	9/28	51.3	61.6	57.0	
Mean		77.9	47	9/30	49.6	-	63.3	
LSD 0.20		3.5	1	0.6	9.6	-	2.5	
CV, %		7.2	6	0.5	11.9	-	8.5	

Table 5. (Continued) Performance of soybean varieties at Queenstown (Full Season).

Wye Full Season

Group 4s		2015		2014	2 - Year	Statewide	
Brand	Name	Yield† bu/A	Height in	Leaf Drop	Yield bu/A	Yield bu/A	Yield† bu/A
Hubner Seed	H48-13R2STS	72.5	43	10/7	58.8	65.7	71.5
Southern States	SS 4725NS R2	75.3	45	10/3	60.7	68.0	69.6
Asgrow	4835	57.0	42	10/3			69.5
Pioneer	P-46-T21R	82.1 *	45	10/1			68.1
T.A. Seeds	TS4869R25	78.8	42	10/1			68.0
Doebblers	DB4715RR	65.6	41	9/28	58.6	62.1	67.8
Southern States	SS 4915NS R2	77.4	45	9/6			67.6
NK	S47-K5	75.5	39	10/2			67.6
USG	74D95RS	76.2	43	10/4			67.5
Asgrow	4632	77.5	36	9/27			67.4
USG	74A74RS	81.1 *	45	10/6			67.1
NK	S48-D9	79.3	45	9/27			66.6
Terral Seed	REV47R34	68.3	45	9/30			66.3
USG	74B83RS	64.0	37	9/30			65.6
T.A. Seeds	TS4669R2	71.2	38	9/25			65.4
Dyna-Gro	S46RY85	66.2	41	10/2	55.2	60.7	65.3
Dyna-Gro	S49RY25	73.8	45	10/7	50.6	62.2	65.1
Mid-Atlantic	MA4614RR2/STS	75.2	42	10/3			65.0
Mid-Atlantic	MA4722RR2/STS	67.7	42	10/3			64.7
Southern States	SS 4714NS R2	74.3	45	10/6	49.0	61.6	64.1
Southern States	SS 4917N R2	64.1	37	9/27	44.8	54.5	63.5
CZ	4959	67.4	44	10/8			62.8
Dyna-Gro	S48RS53 STS/RR2Y	64.9	44	10/3	51.8	58.4	61.8
Terral Seed	REV49R94	53.2	40	9/29			61.6
Syngenta	S48-P4	71.7	48	10/1			60.5
	Mean	71.2	42	10/1	51.1		66.0
	LSD 0.20	2.2	2	1.7	11.3		3.0
	CV, %	16.6	8.9	2	12.3		10.6

Group 5		2015		2014	2 - Year	Statewide	
Brand	Name	Yield† bu/A	Height in	Leaf Drop	Yield bu/A	Yield bu/A	Yield† bu/A
Terral Seed	REV51A56	74.9 *	46.3	10/1			62.8
USG	74F53RS	59.8	42.0	10/1			61.7
Terral Seed	REV55R53	49.7	40.0	10/6			61.3
Terral Seed	REV56R63	65.8	50.7	10/8			61.2
Terral Seed	REV57R21	55.8	52.3	10/9			60.4
	Mean	61.2	46.3	10/5			61.0
	LSD 0.20	2.3	1.5	1.1			2.7
	CV, %	15.0	11.1	1.3			13.0

Planting Date: June 16
 Harvest Date: Oct. 23
 Row Spacing: 24"
 Tillage: Conv.

†All yields and test weights are reported at a 13% moisture content, yields followed by an asterisk " * " are not significantly different from leading line.

We gratefully acknowledge the help of the personnel of the University of Maryland Research and Education Centers.

Table 6. Performance of soybean varieties at Queenstown (Double Crop).

Wye Double Crop							
Group 3							
Brand	Name	2015			2014	2-Year	Statewide
		Yield† bu/A	Height in	Leaf Drop	Yield bu/A	Yield bu/A	Yield† bu/A
Doeblers	DB3815RR	58.7	27	10/13	57.8	58.3	68.7
USG	73P93R	59.8	25	10/11	64.9	62.3	67.2
Terral Seed	REV39A35	60.9	25	10/11	-	-	66.3
NK†	S39-C4	52.7	25	10/10	-	-	65.5
Dyna-Gro	S39RY65	60.9	27	10/12	64.4	62.7	65.4
CZ	S3991	65.1 *	26	10/11	-	-	64.9
Hubner Seed	H37-14R2STS	55.4	27	10/11	68.4	61.9	64.6
Southern States	SS 3914NS R2	52.1	23	10/10	-	-	64.4
Pioneer†	P-39-T67R	56.0	26	10/11	-	-	63.9
Seedway	SG3764	52.7	24	10/10	-	-	63.8
Asgrow†	S3832	50.4	23	10/10	-	-	63.6
Seedway	SG3963	51.5	24	10/12	-	-	63.4
Terral Seed	REV38R10	58.0	26	10/11	-	-	63.1
Asgrow†	S3936	51.0	23	10/11	-	-	63.1
Mid-Atlantic	MA3415RR2	57.3	26	10/9	-	-	63.0
Mid-Atlantic	MA3889RR/STS	52.2	26	10/11	61.6	56.9	62.1
Mid-Atlantic	MA3815NRR2	53.0	26	10/11	70.1	63.7	61.6
Southern States	SS 3813N R2	51.4	24	10/11	59.4	55.4	61.3
CZ	S3560	50.0	24	10/9	-	-	61.1
Dyna-Gro	S37RS96	51.0	26	10/11	-	-	61.0
Seedway	SG3644	51.0	24	10/12	-	-	60.4
Dyna-Gro	S38RY56	49.2	26	10/11	-	-	59.8
Hubner Seed	H35-16R2	47.8	24	10/10	-	-	58.3
Mid-Atlantic	MA3516nRR2	47.3	24	10/11	-	-	57.5
Doeblers	DB3516R	39.5	22	10/11	-	-	54.3
Mean		53.4	25	10/11	53.4	-	62.7
LSD 0.20		3.8	2	0.8	3.8	-	4.2
CV, %		10.9	9.1		10.9	-	9.8

Group 4							
Brand	Name	2015			2014	2-Year	Statewide
		Yield† bu/A	Height in	Leaf Drop	Yield bu/A	Yield bu/A	Yield† bu/A
Dyna-Gro	S31RY45	65.1	34	10/14	63.7	64.4	67.9
Hubner Seed	H42-16R2	59.9	29	10/12	-	-	66.1
Syngenta	S45-R7	60.9	32	10/12	-	-	65.9
Mid-Atlantic	MA4315RR2/STS	65.6 *	31	10/13	-	-	65.8
Southern States	SS 4514N R2	66.6 *	32	10/13	55.2	60.9	65.7
Southern States	SS 4215NS R2	55.1 *	29	10/12	-	-	65.4
USG	74B42R	62.4	30	10/12	53.9	58.2	64.8
CZ	4181	58.9	31	10/12	-	-	64.4
Hubner Seed	H45-16R2	64.0	29	10/14	-	-	64.2
USG	74F24R5	58.6	32	10/13	70.7	64.7	63.8
Asgrow	4336	60.3	31	10/12	-	-	63.6
Hubner Seed	H42-13R2	66.2 *	31	10/13	60.9	63.5	63.6
Syngenta	S40-N2	62.3	32	10/12	-	-	63.3
T.A. Seeds	TS4269R25	62.2	31	10/12	-	-	63.0
CZ	4590	60.4	32	10/12	-	-	62.7
Dyna-Gro	S42RY46	58.3	31	10/14	-	-	62.6
Southern States	SS 4312N R2	60.7	28	10/11	61.9	61.3	62.6
Southern States	SS 4510N R2	52.9	29	10/13	-	-	62.6
Dyna-Gro	S39RY43	56.2	29	10/13	56.2	56.2	62.5
Asgrow	4135	55.9	29	10/11	-	-	62.5
Syngenta	S43-K1	56.2	31	10/12	-	-	62.1
Mid-Atlantic	MA4355RR2/STS	59.4	32	10/14	61.1	60.2	61.9
Southern States	SS 4414N R2	55.4	31	10/13	-	-	61.8
NK	S42-E5	58.4	30	10/14	-	-	61.4
NK	S41-J6	54.4	30	10/12	-	-	61.3
Dyna-Gro	S43RY95	58.3	32	10/14	51.0	54.6	61.1
Dyna-Gro	S40RY25	53.6	28	10/11	64.7	59.1	57.0
Mean		59.6	31	10/12	61.5	-	63.3
LSD 0.20		1.2	2	0.5	7.3	-	2.5
CV, %		8.0	8.0		10	-	8.5

Table 6. (Continued) Performace of soybean varieties at Queenstown (Double-Crop).

Group 4s		2015			2014		2-Year	Statewide
Brand	Name	Yield† bu/A	Height in	Leaf Drop	Yield bu/A	Yield bu/A	Yield† bu/A	
Hubner Seed	H48-13R2STS	68.9	35	10/17	69.9	69.4	71.5	
Southern States	SS 4725NS R2	71.6 *	36	10/17	72.0	71.8	69.6	
Asgrow	4835	68.0	33	10/17	-	-	69.5	
Pioneer	P-46-T21R	69.4 *	32	10/15	-	-	68.1	
T.A. Seeds	TS4869R25	66.9	34	10/17	-	-	68.0	
Doebliers	DB4715RR	67.9	32	10/16	71.7	69.8	67.8	
Southern States	SS 4915NS R2	67.5	35	10/17	-	-	67.6	
NK	S47-K5	68.6	32	10/16	-	-	67.6	
USG	74D95RS	62.1	31	10/16	-	-	67.5	
Asgrow	4632	65.1	34	10/15	-	-	67.4	
USG	74A74RS	61.7	33	10/16	-	-	67.1	
NK	S48-D9	65.6	33	10/17	-	-	66.6	
Terral Seed	REV47R34	64.4	36	10/15	-	-	66.3	
USG	74B83RS	69.0	30	10/17	-	-	65.6	
T.A. Seeds	TS4669R2	65.8	33	10/15	-	-	65.4	
Dyna-Gro	S46RY85	68.4	32	10/16	70.7	69.5	65.3	
Dyna-Gro	S49RY25	63.9	33	10/17	63.4	63.6	65.1	
Mid-Atlantic	MA4614RR2/STS	66.5	34	10/16	-	-	65.0	
Mid-Atlantic	MA4722RR2/STS	59.9	33	10/17	-	-	64.7	
Southern States	SS 4714NS R2	61.2	33	10/16	73.5	67.3	64.1	
Southern States	SS 4917N R2	59.1	30	10/16	68.8	63.9	63.5	
CZ	4959	59.0	31	10/17	-	-	62.8	
Dyna-Gro	S48RS53 STS/RR2	61.4	32	10/17	71.1	66.2	61.8	
Terral Seed	REV49R94	64.1	34	10/17	-	-	61.6	
Syngenta	S48-P4	59.7	36	10/16	-	-	60.5	
Mean		65.0	33	10/16	69		66.0	
LSD 0.20		2.6	1	0.5	8		3.0	
CV, %		7.4	6.9		8.05		10.6	

Group 5		2015			2014		2-Year	Statewide
Brand	Name	Yield† bu/A	Height in	Leaf Drop	Yield bu/A	Yield bu/A	Yield† bu/A	
Terral Seed	REV51A56	68.0 *	33	10/17	-	-	62.8	
USG	74F53RS	67.5 *	30	10/16	-	-	61.7	
Terral Seed	REV55R53	58.7	33	10/25	-	-	61.3	
Terral Seed	REV56R63	55.3	36	10/24	-	-	61.2	
Terral Seed	REV57R21	57.6	36	10/24	-	-	60.4	
Mean		61.4	34	10/21			61.0	
LSD 0.20		2.6	1	0.4			2.7	
CV, %		9.9	7.7				13.0	

Planting Date: June 25

Harvest Date: Nov. 11

Row Spacing: 7.5"

Tillage: None

†All yields and test weights are reported at a 13% moisture content, yields followed by an asterisk " * " are not significantly different from leading line.

We gratefully acknowledge the help of the personnel of the University of Maryland Research and Education Centers.

Table 7. Performance of soybean varieties at Quantico (Full Season).

Poplar Hill Full Season

Group 3							
Brand	Name	2015			2014	2-Year	Statewide
		Yield† bu/A	Height in	Leaf Drop	Yield bu/A	Yield bu/A	Yield† bu/A
Doebblers	DB3815RR	74.1 *	35.0	9/19	56.9	65.5	68.7
USG	73P93R	71.1	39.0	9/20	65.1	68.1	67.2
Terral Seed	REV39A35	75.6 *	39.0	9/18	-	-	66.3
NK†	S39-C4	72.8	39.7	9/17	-	-	65.5
Dyna-Gro	S39RY65	73.5 *	38.7	9/21	56.1	64.8	65.4
CZ	3991	59.9 *	34.3	9/22	-	-	64.9
Hubner Seed	H37-14R2ST5	77.8 *	38.3	9/21	58.4	68.1	64.6
Southern States	SS 3914NS R2	64.6	35.3	9/21	58.3	61.5	64.4
Pioneer†	P-39-T67R	65.2	34.3	9/19	-	-	63.9
Seedway	SG3764	66.2	36.7	9/18	-	-	63.8
Asgrow†	3832	62.5	34.3	9/18	-	-	63.6
Seedway	SG3963	67.0	36.7	9/20	-	-	63.4
Terral Seed	REV38R10	69.5	40.7	9/19	-	-	63.1
Asgrow†	3936	70.0	38.0	9/18	-	-	63.1
Mid-Atlantic	MA3415RR2	67.7	36.0	9/16	-	-	63.0
Mid-Atlantic	MA3889RR/ST5	64.0	40.0	9/19	57.4	60.7	62.1
Mid-Atlantic	MA3815NRR2	62.4	36.7	9/21	57.1	59.8	61.6
Southern States	SS 3813N R2	65.4	35.0	9/20	58.2	61.8	61.3
CZ	3560	63.1	35.3	9/15	-	-	61.1
Dyna-Gro	S37R596	65.2	36.7	9/18	-	-	61.0
Seedway	SG3644	61.1	34.7	9/19	-	-	60.4
Dyna-Gro	S38RY56	58.4	36.3	9/21	-	-	59.8
Hubner Seed	H35-16R2	67.7	35.0	9/18	-	-	58.3
Mid-Atlantic	MA3516nRR2	61.8	34.3	9/20	-	-	57.5
Doebblers	DB3516R	55.1	36.0	9/16	-	-	54.3
Mean		66.5	37	9/19	57		62.7
LSD 0.20		4.1	1.9	1.2	9.9		4.2
CV, %		9.5	6.7		10.8		9.8

Group 4							
Brand	Name	2015			2014	2-Year	Statewide
		Yield† bu/A	Height in	Leaf Drop	Yield bu/A	Yield bu/A	Yield† bu/A
Dyna-Gro	31RY45	71.2 *	42	9/27	56.8	64.0	67.9
Hubner Seed	H42-16R2	67.6	38	9/22	59.8	63.7	66.1
Syngenta†	S45-R7	69.6 *	38	9/21	-	-	65.9
Mid-Atlantic	MA4315RR2/ST5	64.9	36	9/26	-	-	65.8
Southern States	SS 4514N R2	65.8	38	9/27	-	-	65.7
Southern States	SS 4215NS R2	70.6 *	36	9/23	-	-	65.4
USG	74B42R	68.0	39	9/22	54.1	61.0	64.8
CZ	4181	69.2	38	9/22	-	-	64.4
Hubner Seed	H45-16R2	57.4	35	9/28	-	-	64.2
USG	74F24R5	64.6	41	9/23	53.3	58.9	63.8
Asgrow†	4336	72.2 *	41	9/23	-	-	63.6
Hubner Seed	H42-13R2	55.3	30	9/24	-	-	63.6
Syngenta	S40-N2	57.0	31	9/22	-	-	63.3
T.A. Seeds	TS4269R25	63.9	40	9/21	-	-	63.0
CZ	4590	63.3	42	9/24	-	-	62.7
Dyna-Gro	S42RY46	68.0	41	9/26	-	-	62.6
Southern States	SS 4312N R2	65.9	36	9/22	52.9	59.4	62.6
Southern States	SS 4510N R2	68.3	44	9/26	56.6	62.5	62.6
Dyna-Gro	39RY43	68.4	39	9/24	57.1	62.7	62.5
Asgrow†	4135	67.5	38	9/21	-	-	62.5
Syngenta	S43-K1	63.6	41	9/23	-	-	62.1
Mid-Atlantic	MA4355RR2/ST5	58.9	38	9/24	53.4	56.1	61.9
Southern States	SS 4414N R2	68.6	40	9/24	-	-	61.8
NK†	S42-E5	66.6	38	9/24	-	-	61.4
NK†	S41-J6	70.9 *	42	9/22	-	-	61.3
Dyna-Gro	S43RY95	69.0	42	9/25	60.2	64.6	61.1
Dyna-Gro	S40RY25	51.8	31	9/21	53.5	52.6	57.0
Mean		65.5	38	9/23	55.3	-	63.3
LSD 0.20		2.6	1	1.1	8.8	-	2.5
CV, %		9.0	9.9		8.4	-	8.5

Table 7. (Continued) Performance of soybean varieties at Quantico (Full Season).

Group 4s		2015			2014		2-Year	Statewide
		Yield†	Height	Leaf	Yield	Yield	Yield†	
Brand	Name	bu/A	in	Drop	bu/A	bu/A	bu/A	
Hubner Seed	H48-13R2STS	70.6 *	45	9/28	57.6	64.1	71.5	
Southern States	SS 4725NS R2	65.0	45	9/27	65.4	65.2	69.6	
Asgrow†	4835	64.8	41	9/30	-	-	69.5	
Pioneer†	P-46-T21R	60.8	33	9/26	-	-	68.1	
T.A. Seeds	TS4869R25	61.0	37	10/1	-	-	68.0	
Doebler	DB4715RR	66.0	37	9/27	62.1	64.1	67.8	
Southern States	SS 4915NS R2	60.1	38	10/1	-	-	67.6	
NK†	S47-K5	63.6	37	9/29	-	-	67.6	
USG	74D95RS	69.2 *	40	10/1	-	-	67.5	
Asgrow†	4632	67.6	41	9/27	-	-	67.4	
USG	74A74RS	60.1	37	10/1	-	-	67.1	
NK†	S48-D9	59.5	39	9/28	-	-	66.6	
Terral Seed	REV47R34	68.1 *	43	9/26	-	-	66.3	
USG	74B83RS	67.6	42	10/1	-	-	65.6	
T.A. Seeds	TS4669R2	65.9	40	9/26	-	-	65.4	
Dyna-Gro	S46RY85	68.8 *	38	9/27	64.0	66.4	65.3	
Dyna-Gro	S49RY25	57.1	38	9/30	57.6	57.3	65.1	
Mid-Atlantic	MA4614RR2/STS	65.0	38	9/30	-	-	65.0	
Mid-Atlantic	MA4722RR2/STS	65.8	37	10/2	-	-	64.7	
Southern States	SS 4714NS R2	62.7	41	9/30	64.5	63.6	64.1	
Southern States	SS 4917N R2	66.3	38	9/23	58.9	62.6	63.5	
CZ	4959	58.8	35	9/30	-	-	62.8	
Dyna-Gro	S48R553 STS/RR2V	66.4	37	9/29	64.2	65.3	61.8	
Terral Seed	REV49R94	67.0	42	9/29	-	-	61.6	
Syngenta	S48-P4	59.1	41	9/25	-	-	60.5	
	Mean	64.3	39	9/28	61.9	-	66.0	
	LSD 0.20	2.9	2	1.4	14.7	-	3.0	
	CV, %	7.5	7.5	10.7	-	-	10.6	

Group 5		2015			2014		2-Year	Statewide
		Yield†	Height	Leaf	Yield	Yield	Yield†	
Brand	Name	bu/A	in	Drop	bu/A	bu/A	bu/A	
Terral Seed	REV51A56	67.9 *	43	9/30	-	-	62.8	
USG	74F53RS	50.0	37	9/29	-	-	61.7	
Terral Seed	REV55R53	63.1	39	10/8	-	-	61.3	
Terral Seed	REV56R63	58.8	45	10/8	-	-	61.2	
Terral Seed	REV57R21	56.6	46	10/8	-	-	60.4	
	Mean	59.3	42	10/4	-	-	61.0	
	LSD 0.20	2.6	2	1.1	-	-	2.7	
	CV, %	11.7	9.4	-	-	-	13.0	

Planting Date: June 17

Harvest Date: Oct. 24

Row Spacing: 20"

Tillage: None

†Entry Supported by Maryland Soybean Board

‡All yields and test weights are reported at a 13% moisture content, yields followed by an asterisk " * " are not significantly different from leading line.

We gratefully acknowledge the help of the personnel of the University of Maryland Research and Education Centers.

Table 8. Performance of soybean varieties at Quantico (Double Crop).

Poplar Hill Double Crop

Group 3

Brand	Name	2015		Leaf Drop	2014		2-Year Yield	Statewide Yield†
		Yield† bu/A	Height in		Yield bu/A	Yield bu/A		
Doeblers	DB3815RR	65.5	32	9/29	43.8	54.7	68.7	
USG	73P93R	65.7	32	9/30	31.8	48.8	67.2	
Terral Seed	REV39A35	57.5	31	9/26	-	-	66.3	
NK	S39-C4	72.0 *	34	9/28	-	-	65.5	
Dyna-Gro	S39RY65	67.5	33	10/1	40.2	53.9	65.4	
CZ	3991	63.0	29	9/28	-	-	64.9	
Hubner Seed	H37-14R2STS	54.6	32	9/28	38.8	46.7	64.6	
Southern States	SS 3914NS R2	65.6	30	9/27	36.3	51.0	64.4	
Pioneer	P-39-T67R	62.8	30	9/26	-	-	63.9	
Seedway	SG3764	69.1 *	31	9/29	-	-	63.8	
Asgrow	3832	64.3	29	9/30	-	-	63.6	
Seedway	SG3963	70.3 *	31	9/29	-	-	63.4	
Terral Seed	REV38R10	55.6	33	9/28	-	-	63.1	
Asgrow	3936	66.3	34	9/26	-	-	63.1	
Mid-Atlantic	MA3415RR2	59.9	31	9/27	-	-	63.0	
Mid-Atlantic	MA3889RR/STS	71.9 *	33	9/29	41.5	56.7	62.1	
Mid-Atlantic	MA3815NRR2	66.2	32	10/1	38.5	52.3	61.6	
Southern States	SS 3813N R2	66.4	31	9/28	49.3	57.8	61.3	
CZ	3560	57.0	30	9/26	-	-	61.1	
Dyna-Gro	S37RS96	61.5	30	9/28	-	-	61.0	
Seedway	SG3644	56.6	29	9/27	-	-	60.4	
Dyna-Gro	S38RY56	62.8	33	9/28	-	-	59.8	
Hubner Seed	H35-16R2	56.4	29	9/27	-	-	58.3	
Mid-Atlantic	MA3516nRR2	52.9	28	9/29	-	-	57.5	
Doeblers	DB3516R	57.8	31	9/27	-	-	54.3	
Mean		62.8	31	9/28	39.4	-	62.7	
LSD 0.20		3.7	2	1.5	5.8	-	4.2	
CV, %		9.9	6.9	12.1	-	-	9.8	

Group 4

Brand	Name	2015		Leaf Drop	2014		2-Year Yield	Statewide Yield†
		Yield† bu/A	Height in		Yield bu/A	Yield bu/A		
Dyna-Gro	31RY45	56.1	31	10/3	35.7	45.9	67.9	
Hubner Seed	H42-16R2	69.4 *	35	10/1	-	-	66.1	
Syngenta	S45-R7	55.0	31	10/1	-	-	65.9	
Mid-Atlantic	MA4315RR2/STS	56.3	32	10/1	-	-	65.8	
Southern States	SS 4514N R2	55.4	34	10/2	30.9	43.2	65.7	
Southern States	SS 4215NS R2	63.8	34	10/1	-	-	65.4	
USG	74B42R	63.6	33	10/1	45.5	54.6	64.8	
CZ	4181	56.4	35	10/1	-	-	64.4	
Hubner Seed	H45-16R2	56.3	37	10/1	-	-	64.2	
USG	74F24RS	61.1	36	10/2	41.8	51.5	63.8	
Asgrow	4336	58.2	35	9/30	-	-	63.6	
Hubner Seed	H42-13R2	55.1	33	10/1	31.8	43.5	63.6	
Syngenta	S40-N2	57.4	32	9/30	-	-	63.3	
T.A. Seeds	TS4269R25	62.4	35	10/1	-	-	63.0	
CZ	4590	51.9	35	10/1	-	-	62.7	
Dyna-Gro	S42RY46	56.7	34	10/2	-	-	62.6	
Southern States	SS 4312N R2	60.5	31	10/1	42.4	51.4	62.6	
Southern States	SS 4510N R2	61.3	39	10/2	-	-	62.6	
Dyna-Gro	39RY43	55.0	30	10/1	42.0	48.5	62.5	
Asgrow	4135	55.3	32	9/30	-	-	62.5	
Syngenta	S43-K1	52.8	36	10/1	-	-	62.1	
Mid-Atlantic	MA4355RR2/STS	56.6	38	10/2	32.3	44.5	61.9	
Southern States	SS 4414N R2	56.4	34	10/1	-	-	61.8	
NK	S42-E5	55.8	32	10/2	-	-	61.4	
NK	S41-J6	54.3	34	10/1	-	-	61.3	
Dyna-Gro	S43RY95	53.0	36	10/2	42.7	47.8	61.1	
Dyna-Gro	S40RY25	47.5	30	9/28	39.9	43.7	57.0	
Mean		57.2	34	10/1	39.4	-	63.3	
LSD 0.20		2.5	2	1.5	5.0	-	2.5	
CV, %		8.8	8.4	12.3	-	-	8.5	

Table 8. (Continued) Performance of soybean varieties at Quantico (Double-Crop).

Group 4s		2015			2014	2-Year	Statewide
Brand	Name	Yield† bu/A	Height in	Leaf Drop	Yield bu/A	Yield bu/A	Yield† bu/A
Hubner Seed	H48-13R2STS	70.5	38	10/8	40.9	55.7	71.5
Southern States	SS 4725NS R2	68.7	38	10/4	41.5	55.1	69.6
Asgrow	4835	77.7 *	37	10/6	-	-	69.5
Pioneer	P-46-T21R	66.0	35	10/2	-	-	68.1
T.A. Seeds	TS4869R25	66.2	41	10/7	-	-	68.0
Doebblers	DB4715RR	72.6	36	10/3	42.2	57.4	67.8
Southern States	SS 4915NS R2	66.6	41	10/8	-	-	67.6
NK	S47-K5	66.7	35	10/3	-	-	67.6
USG	74D95RS	64.9	37	10/6	-	-	67.5
Asgrow	4632	58.7	36	10/3	-	-	67.4
USG	74A74RS	67.5	36	10/7	-	-	67.1
NK	S48-D9	59.2	37	10/2	-	-	66.6
Terral Seed	REV47R34	69.4	36	10/3	-	-	66.3
USG	74B83RS	67.5	35	10/7	-	-	65.6
T.A. Seeds	TS4669R2	64.6	36	10/3	-	-	65.4
Dyna-Gro	S46RY85	65.1	33	10/3	38.1	51.6	65.3
Dyna-Gro	S49RY25	64.8	37	10/7	43.9	54.4	65.1
Mid-Atlantic	MA4614RR2/STS	56.0	37	10/4	-	-	65.0
Mid-Atlantic	MA4722RR2/STS	66.7	35	10/6	-	-	64.7
Southern States	SS 4714NS R2	66.1	35	10/4	36.5	51.3	64.1
Southern States	SS 4917N R2	63.2	36	10/3	40.3	51.8	63.5
CZ	4959	65.1	35	10/7	-	-	62.8
Dyna-Gro	S48RS53 STS/RR2Y	63.0	37	10/8	35.0	49.0	61.8
Terral Seed	REV49R94	70.1	37	10/5	-	-	61.6
Syngenta	S48-P4	55.9	38	10/2	-	-	60.5
	Mean	65.7	37	10/5	38.8	-	66.0
	LSD 0.20	3.5	1	1.2	5.6	-	3.0
	CV, %	9.5	6.2	-	9.8	-	10.6

Group 5		2015			2014	2-Year	Statewide
Brand	Name	Yield† bu/A	Height in	Leaf Drop	Yield bu/A	Yield bu/A	Yield† bu/A
Terral Seed	REV51A56	75.0 *	36	10/8	-	-	62.8
USG	74F53RS	67.5	33	10/7	-	-	61.7
Terral Seed	REV55R53	72.3 *	37	9/27	-	-	61.3
Terral Seed	REV56R63	63.2	37	9/20	-	-	61.2
Terral Seed	REV57R21	52.0	44	9/21	-	-	60.4
	Mean	66.0	38	9/28	-	-	61.0
	LSD 0.20	6.0	1	3.5	-	-	2.7
	CV, %	15.5	10.7	-	-	-	13.0

Planting Date: June 27
 Harvest Date: Oct. 31
 Row Spacing: 20"
 Tillage: None

†All yields and test weights are reported at a 13% moisture content, yields followed by an asterisk " * " are not significantly different from leading line.

We gratefully acknowledge the help of the personnel of the University of Maryland Research and Education Centers.

Table 9. Statewide performance of soybean varieties.

Brand	Name	Statewide			Keedysville			Quantico			Double Crop			Full Season, Irrigated			Queenstown			Double Crop			Lodging, % damage, n = 3
		Yield bu/A	Yield Percent	Height in	Yield bu/A	Yield Percent	Height in	Yield bu/A	Yield Percent	Height in	Yield bu/A	Yield Percent	Height in	Yield bu/A	Yield Percent	Height in	Yield bu/A	Yield Percent	Height in	Yield bu/A	Yield Percent	Height in	
Doebiers	DB3815RR	68.7 *	109.5	31	63.4 *	101	31	74.1 *	35.0	9/19	65.5	32	81.7 *	42	58.7	27	10/13	1.0	0.2				
USG	72P93R	67.2 *	107.1	28	59.6	10/2	28	71.1	39.0	9/20	65.7	32	79.9	44	59.8	25	10/11	1.0	0.4				
Terral Seed	REV/39A35	66.3 *	105.6	35	53.2	10/1	35	75.6 *	39.0	9/18	57.5	31	84.1 *	48	60.9	25	10/11	1.0	0.4				
NK	539-C4	65.5 *	104.3	30	45.9	9/30	30	72.8	39.7	9/17	72.0 *	34	83.9 *	47	52.7	25	10/10	1.0	0.6				
Dyna-Gro	539RV65	65.4 *	104.2	31	49.9	10/2	31	73.5 *	38.7	9/21	67.5	33	75.1	47	60.9	27	10/12	1.0	0.4				
CZ	3991	64.9 *	103.4	31	56.0	10/3	31	59.9 *	34.3	9/22	63.0	29	80.4	41	65.1 *	26	10/11	1.0	1.2				
Hubner Seed	H37-14R25TS	64.6 *	103	33	50.2	10/1	33	77.8 *	38.3	9/21	54.6	32	85.0 *	45	55.4	27	10/11	1.0	0.4				
Southern States	SS 3914NS R2	64.4	102.7	30	52.3	9/30	30	64.6	35.3	9/21	65.6	30	87.4 *	41	52.1	23	10/10	1.0	0.6				
Pioneer	P-39-167R	63.9	101.8	28	55.8	9/30	28	65.2	34.3	9/19	62.8	30	79.5	43	56.0	26	10/11	1.0	0				
Seedway	SG3764	63.8	101.7	30	50.3	10/2	30	66.2	36.7	9/18	69.1 *	31	80.8	40	52.7	24	10/10	2.0	0.6				
Asgrow	3832	63.6	101.3	31	60.4	9/30	31	62.5	34.3	9/18	64.3	29	80.3	41	50.4	23	10/10	1.0	0.6				
Seedway	SG3963	63.4	101.1	29	45.6	10/2	29	67.0	36.7	9/20	70.3 *	31	82.8 *	45	51.5	24	10/12	1.0	0.4				
Terral Seed	REV/38R10	63.1	100.6	33	56.6	10/1	33	69.5	40.7	9/19	55.6	33	75.7	47	58.0	26	10/11	1.0	0				
Asgrow	3936	63.1	100.5	28	53.4	9/30	28	70.0	38.0	9/18	66.3	34	74.8	45	51.0	23	10/11	1.0	0.4				
Mid-Atlantic	MA3415RR2	63.0	100.5	31	54.1	10/1	31	67.7	36.0	9/16	59.9	31	76.1	42	57.3	26	10/9	1.0	1				
Mid-Atlantic	MA3889RR/STS	62.1	99.03	33	51.5	10/2	33	64.0	40.0	9/19	71.9 *	33	71.0	43	52.2	26	10/11	1.0	0.2				
Mid-Atlantic	MA3815NRR2	61.6	98.24	29	47.2	10/2	29	62.4	36.7	9/21	66.2	32	79.4	44	53.0	26	10/11	1.0	0.2				
Southern States	SS 3813N R2	61.3	97.76	29	46.0	10/1	29	65.4	35.0	9/20	66.4	31	77.5	38	51.4	24	10/11	1.0	0.2				
CZ	3560	61.1	97.43	29	57.3	9/30	29	63.1	35.3	9/15	57.0	30	78.2	42	50.0	24	10/9	1.0	0.2				
Dyna-Gro	537RS96	61.0	97.26	33	50.1	10/1	33	65.2	36.7	9/18	61.5	30	77.2	42	51.0	26	10/11	1.0	1				
Seedway	SG3644	60.4	96.27	34	56.6	10/2	34	61.1	34.7	9/19	56.6	29	76.6	43	51.0	24	10/12	1.0	1.2				
Dyna-Gro	538RV56	59.8	95.37	31	55.2	10/2	31	58.4	36.3	9/21	62.8	33	73.7	43	49.2	26	10/11	1.0	0.2				
Hubner Seed	H35-16R2	58.3	92.98	28	45.3	10/1	28	67.7	35.0	9/18	56.4	29	74.4	40	47.8	24	10/10	1.0	0.4				
Mid-Atlantic	MA3516NRR2	57.5	91.72	32	50.4	10/1	32	61.8	34.3	9/20	52.9	28	75.2	43	47.3	24	10/11	1.0	1.2				
Doebiers	DB3516R	54.3	86.49	28	42.0	9/30	28	55.1	36.0	9/16	57.8	31	77.0	40	39.5	22	10/11	1.0	1.8				
Mean		62.7		31	52.3	10/1	31	66.5	37	9/19	62.8	31	78.7	43	53.4	25	10/11	1.0	0.6				
LSD 0.20		4.2		3	3.3	1.2	3	4.1	1.9	1.2	3.7	2	6.0	2	3.8	2	0.8						
CV, %		9.8		9.4	11		9.4	9.5	6.7		9.9	6.9	7.8		10.9		9.1						

Table 9. (Continued) Statewide performance of soybean varieties.

Brand	Name	Statewide			Keedysville			Quantico			Double Crop			Queenstown						
		Yield	Height	Drop	Yield	Height	Drop	Yield	Height	Drop	Yield	Height	Drop	Yield	Height	Drop				
Dyna-Gro	31RV45	67.9 *	107.3	62.4	37	10/3	71.2 *	42	9/27	56.1	31	10/3	84.9 *	47	10/2	65.1	34	10/14	1.3	0.2
Hulber Seed	H42-16R2	66.1 *	104.4	55.6	32	10/2	67.6	38	9/22	69.4 *	35	10/1	78.0	47	9/29	59.9	29	10/12	1.0	1.8
Syngenta	S45-R7	65.9 *	104.1	61.4	38	10/2	69.6 *	38	9/21	55.0	31	10/1	82.8	47	9/29	60.9	32	10/12	1.0	0.6
Mid-Atlantic	MAA4318R2/STS	65.8 *	103.9	56.8	41	10/3	64.9	36	9/26	56.3	32	10/1	85.3 *	44	9/30	65.6 *	31	10/13	1.0	1.8
Southern States	SS 4514N R2	65.7 *	103.7	65.3 *	34	10/4	65.8	38	9/27	55.4	34	10/2	75.1	46	10/2	66.6 *	32	10/13	1.0	1.2
Southern States	SS 4215NS R2	65.4 *	103.3	58.0	34	10/4	70.6 *	36	9/23	63.8	34	10/1	79.7	47	9/29	55.1 *	29	10/12	1.0	0.4
USG	74B42R	64.8	102.3	53.0	34	10/3	68.0	39	9/22	63.6	33	10/1	76.8	44	10/1	62.4	30	10/12	1.0	0.8
CZ	4181	64.4	101.7	62.4	38	10/6	69.2	38	9/22	56.4	35	10/1	75.2	47	9/30	58.9	31	10/12	1.7	1.8
Hulber Seed	H45-16R2	64.2	101.5	65.9 *	39	10/4	57.4	35	9/28	56.3	37	10/1	77.7	49	9/30	64.0	29	10/14	1.3	0.8
USG	74F24RS	63.8	100.7	57.8	35	10/2	64.6	41	9/23	61.1	36	10/2	76.6	49	9/30	58.6	32	10/13	1.3	0.8
Asgrow	4336	63.6	100.4	51.0	37	10/2	72.2 *	41	9/23	58.2	35	9/30	76.2	47	9/30	60.3	31	10/12	1.0	0.8
Hulber Seed	H42-13R2	63.6	100.4	53.9	35	10/3	55.3	30	9/24	55.1	33	10/1	87.3 *	42	9/30	66.2 *	31	10/13	1.0	1.1
Syngenta	S40-N2	63.3	100	57.8	32	10/3	57.0	31	9/22	57.4	32	9/30	82.1	43	9/29	62.3	32	10/12	1.0	0.4
T.A. Seeds	TS4269R25	63.0	99.53	51.7	35	10/3	63.9	40	9/21	62.4	35	10/1	74.8	49	9/29	62.2	31	10/12	1.3	1.1
CZ	4590	62.7	99.08	57.5	37	10/3	63.3	42	9/24	51.9	35	10/1	80.6	48	10/1	60.4	32	10/12	1.0	0.4
Dyna-Gro	S42RV46	62.6	98.91	55.2	34	10/4	68.0	41	9/26	56.7	34	10/2	74.9	47	10/1	58.3	31	10/14	1.0	1.6
Southern States	SS 4312N R2	62.6	98.82	52.9	34	10/2	65.9	36	9/22	60.5	31	10/1	73.0	42	9/27	60.7	28	10/11	1.0	0.6
Southern States	SS 4510N R2	62.6	98.81	52.0	36	10/3	68.3	44	9/26	61.3	39	10/2	78.2	50	10/2	52.9	29	10/13	1.3	0.8
Dyna-Gro	39RV43	62.5	98.69	56.1	37	10/2	68.4	39	9/24	55.0	30	10/1	76.8	45	9/30	56.2	29	10/13	1.0	0.6
Asgrow	4135	62.5	98.69	54.2	36	10/3	67.5	38	9/21	55.3	32	9/30	79.5	45	9/29	55.9	29	10/11	1.0	0.8
Syngenta	S43-K1	62.1	98.09	53.6	40	10/1	63.6	41	9/23	52.8	36	10/1	84.5 *	45	10/1	56.2	31	10/12	1.0	1.6
Mid-Atlantic	MAA355R2/STS	61.9	97.78	60.2	33	10/3	58.9	38	9/24	56.6	38	10/2	74.5	48	9/30	59.4	32	10/14	1.3	1.4
Southern States	SS 4414N R2	61.8	97.59	53.2	35	10/3	68.6	40	9/24	56.4	34	10/1	75.4	49	9/30	55.4	31	10/13	1.0	0.6
NK	S42-E5	61.4	96.99	53.4	32	10/4	66.6	38	9/24	55.8	32	10/2	72.8	43	10/1	58.4	30	10/14	1.0	1.1
NK	S41-16	61.3	96.77	52.8	33	10/4	70.9 *	42	9/22	54.3	34	10/1	74.0	48	9/29	54.4	30	10/12	1.3	0.6
Dyna-Gro	S43RV95	61.1	96.48	51.4	36	10/3	69.0	42	9/25	53.0	36	10/2	73.8	50	10/1	58.3	32	10/14	1.0	0.2
Dyna-Gro	S40RV25	57.0	89.99	60.1	32	10/3	51.8	31	9/21	47.5	30	9/28	71.9	46	9/28	53.6	28	10/11	1.0	1.8
Mean		63.3		56.5	35	10/3	65.5	38	9/23	57.2	34	10/1	77.9	47	9/30	59.6	31	10/12	1.1	1.1
LSD 0.20		2.5		2.8	2	1.2	2.6	1	1.1	2.5	2		3.5	1	0.6	1.2	2	0.5		
CV, %		8.5		9.3	9.3		9.0	9.9		8.8	8.4		7.2	6	0.5	8.0	8.0			

Table 9. (Continued) Statewide performance of soybean varieties.

Brand	Name	Statewide			Keedysville			Quantico			Double Crop			Full Season, Irrigated			Queenstown			Prog. % n = 3
		Yield	Height	Leaf	Yield	Height	Leaf	Yield	Height	Leaf	Yield	Height	Leaf	Yield	Height	Leaf	Yield	Height	Leaf	
		bu/A	Percent	bu/A	In	Drop	bu/A	In	Drop	bu/A	In	Drop	bu/A	In	Drop	bu/A	In	Drop	Lodging, %	
Hubner Seed	H48-13R2STS	71.5 *	108.3	75.0 *	40	10/10	70.6 *	45	9/28	70.5	38	10/8	72.5	43	10/7	68.9	35	10/17	1.7	0.8
Southern States	SS 47ZSN5 R2	69.6 *	105.5	67.6	43	10/11	65.0	45	9/27	68.7	38	10/4	75.3	45	10/3	71.6 *	36	10/17	1.7	4
Asgrow	4835	69.5 *	105.3	80.1 *	39	10/9	64.8	41	9/30	77.7 *	37	10/6	57.0	42	10/3	68.0	33	10/17	2.0	1.6
Pioneer	P-46-T21R	68.1	103.2	62.4	34	10/9	60.8	33	9/26	66.0	35	10/2	82.1 *	45	10/1	69.4 *	32	10/15	1.3	1
T.A. Seeds	TS4869R25	68.0	103.1	67.2	41	10/10	61.0	37	10/1	66.2	41	10/7	78.8	42	10/1	66.9	34	10/17	1.7	1
Doebiers	DB4715RR	67.8	102.8	67.2	41	10/11	66.0	37	9/27	72.6	36	10/3	65.6	41	9/28	67.9	32	10/16	1.0	0.6
Southern States	SS 4915NS R2	67.6	102.4	66.3	38	10/9	60.1	38	10/1	66.6	41	10/8	77.4	45	9/6	67.5	35	10/17	2.0	1.4
NK	S47-K5	67.6	102.4	63.5	42	10/12	63.6	37	9/29	66.7	35	10/3	75.5	39	10/2	68.6	32	10/16	1.7	0.4
USG	74D95NS	67.5	102.2	64.9	38	10/8	69.2 *	40	10/1	64.9	37	10/6	76.2	43	10/4	62.1	31	10/16	2.0	4.4
Asgrow	4632	67.4	102.1	68.1	38	10/10	67.6	41	9/27	58.7	36	10/3	77.5	36	9/27	65.1	34	10/15	1.3	1.2
USG	74A74NS	67.1	101.7	65.2	42	10/10	60.1	37	10/1	67.5	36	10/7	81.1 *	45	10/6	61.7	33	10/16	1.0	2.6
NK	S48-D9	66.6	100.8	69.1	40	10/7	59.5	39	9/28	59.2	37	10/2	79.3	45	9/27	65.6	33	10/17	1.3	0.2
Terral Seed	REV47R34	66.3	100.4	61.2	37	10/10	68.1 *	43	9/26	69.4	36	10/3	68.3	45	9/30	64.4	36	10/15	2.0	0.8
USG	74883RS	65.6	99.37	59.7	35	10/9	67.6	42	10/1	67.5	35	10/7	64.0	37	9/30	69.0	30	10/17	1.7	1.6
T.A. Seeds	TS4669R2	65.4	99.09	59.5	38	10/10	65.9	40	9/26	64.6	36	10/3	71.2	38	9/25	65.8	33	10/15	1.7	1.4
Dyna-Gro	S46RY8S	65.3	98.94	58.0	37	10/10	68.8 *	38	9/27	65.1	33	10/3	66.2	41	10/2	68.4	32	10/16	1.0	4.2
Dyna-Gro	S49RY2S	65.1	98.57	65.7	41	10/10	57.1	38	9/30	64.8	37	10/7	73.8	45	10/7	63.9	33	10/17	1.0	1
Mid-Atlantic	MA4614RR2/STS	65.0	98.52	62.3	36	10/7	65.0	38	9/30	56.0	37	10/4	75.2	42	10/3	66.5	34	10/16	1.0	3.8
Mid-Atlantic	MA4722RR2/STS	64.7	98.02	63.3	41	10/11	65.8	37	10/2	66.7	35	10/6	67.7	42	10/3	59.9	33	10/17	1.0	4
Southern States	SS 4714NS R2	64.1	97.15	56.3	43	10/11	62.7	41	9/30	66.1	35	10/4	74.3	45	10/6	61.2	33	10/16	1.3	3.2
Southern States	SS 4917N R2	63.5	96.15	64.5	36	10/8	66.3	38	9/23	63.2	36	10/3	64.1	37	9/27	59.1	30	10/16	1.0	1.6
CZ	4959	62.8	95.09	63.5	38	10/9	58.8	35	9/30	65.1	35	10/7	67.4	44	10/8	59.0	31	10/17	1.0	1.6
Dyna-Gro	S48RS53 STS/RR2	61.8	93.64	53.3	41	10/10	66.4	37	9/29	63.0	37	10/8	64.9	44	10/3	61.4	32	10/17	2.0	0.6
Terral Seed	REV49R94	61.6	93.42	53.8	35	10/8	67.0	42	9/29	70.1	37	10/5	53.2	40	9/29	64.1	34	10/17	1.7	0.2
Syngenta	S48-P4	60.5	91.69	56.2	43	10/8	59.1	41	9/25	55.9	38	10/2	71.7	48	10/1	59.7	36	10/16	2.0	1.8
Mean		66.0		63.8	39	10/9	64.3	39	9/28	65.7	37	10/5	71.2	42	10/1	65.0	33	10/16	1.5	1.4
LSD 0.20		3.0		3.7	2	1.8	2.9	2	1.4	3.5	1	1.2	2.2	2	1.7	2.6	1	0.5		0.4
CV, %		10.6		12.0	9.5		7.5	7.5		9.5	6.2		16.6	8.9	2	7.4	6.9			

Table 9. Statewide performance of soybean varieties.

Brand	Name	Statewide		Keedysville		Full Season		Quantico		Double Crop		Full Season, Irrigated		Queenstown		Lodging, % n = 3	Frog Eye, % n = 3		
		Yield†	Height	Yield†	Height	Yield†	Height	Yield†	Height	Yield†	Height	Yield†	Height	Yield†	Height				
Terral Seed	REV51A96	62.8 *	102.9†			67.9 *	43	9/20†	75.0 *	36	10/8	74.9 *	46.3	10/1	68.0 *	33	10/17	2.7	0.4
USG	ZAF53NS	61.7 *	101.1			50.0	37	9/29†	67.5	33	10/7	59.8	42.0	10/1	67.5 *	30	10/16	1.0	1.4
Terral Seed	REV55R53	61.3 *	100.4			63.1	39	10/8	72.3 *	37	9/27	49.7	40.0	10/6	58.7	33	10/25	3.0	2.4
Terral Seed	REV56R63	61.2 *	100.3			58.8	45	10/8	63.2	37	9/20	65.8	50.7	10/8	55.3	36	10/24	4.3	0.2
Terral Seed	REV57R21	60.4 *	98.94			56.6	46	10/8	52.0	44	9/21	55.8	52.3	10/9	57.6	36	10/24	4.3	0.4
Mean		61.0				59.3	42	10/4	66.0	38	9/28	61.2	46.3	10/5	61.4	34	10/21	3.1	1.0
LSD 0.20		2.7				2.6	2	1.1	6.0	1	3.5	2.3	1.5	1.1	2.6	1	0.4		
CV, %		13.0†				11.7	9.4		15.5	10.7		15.0	11.1	1.3	9.9	7.7			
Planting Date:		May 29		May 27		June 17		May 26		June 25		May 25		June 25		Nov. 11			
Harvest Date:		Oct. 20		Oct. 24		Oct. 31		Oct. 23		Oct. 23		Oct. 23		Nov. 11					
Row Spacing:		24"		20"		20"		24"		24"		24"		24"		7.5"			
Tillage:		Conv.		None		None		Conv.		None		Conv.		None		None			

†All yields and test weights are reported at a 13% moisture content, yields followed by an asterisk " * " are not significantly different from leading line.
 We gratefully acknowledge the help of the personnel of the University of Maryland Research and Education Centers.

